



ELECTRICAL HARDWARE

Company: Hebei Crown Wealth Trading Co., Ltd
Web: www.hardwaremanufactory.com/



[HTTPS://WWW.HARDWAREMANUFACTORY.COM](https://www.hardwaremanufactory.com)

COMPANY PROFILE



Hebei Crown Wealth is a leading supplier for hardware components to support telecommunication. Our products are grouped into poleline hardware, Aerial Drop Hardware, Drop Attachments & Clamps.

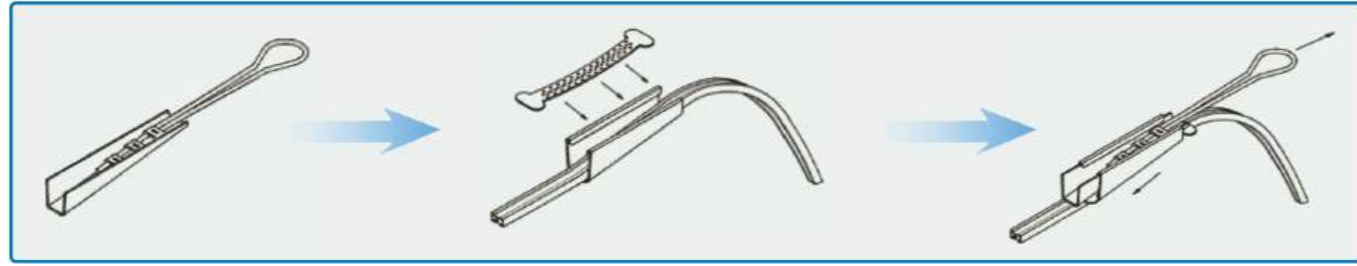
We have the ability of technical innovation as well as research & development. We can develop new products and undertake OEM production.

Our main market are North America, South America, Europe & Australia etc. The foresighted management, innovative scientific mainstay, consummate skilled production worker, faithful and industrious sales team, so we believe that the products, technic and ISO manage play a good role in future's success.

Catalogue

- 3 Drop Wire Clamps
- 5 CATV Drop Wire Clamp
- 5 Service Wedge Clamp
- 6 J Clamp
- 7 Other Fixed Cable
- 8 Support Wire Deadend
- 8 Hoop Fastening Retractor
- 9 Support Wire Deadend
- 10 Drive Ring
- 11 Wrenchable P House Hook
- 12 Pole Band
- 12 Guy Grip
- 13 Pipe Clamps
- 13 Cable Clamps
- 14 Other Product

Drop Wire Clamps



| Parts No. | Description | Material | Shim Type |
|-----------|--------------------------|--------------|-----------|
| CWC-2PRAS | Drop Wire Clamp 1-2 Pair | Aluminum5052 | Serrated |
| CWC-2PRSS | | SS201/SS304 | |



| Parts No. | Description | Material | Shim Type |
|-----------|--------------------------|--------------|-----------|
| CWC-2PRAD | Drop Wire Clamp 1-2 Pair | Aluminum5052 | Dimpled |
| CWC-2PRSD | | SS201/SS304 | |



| Parts No. | Description | Material | Shim Type |
|-----------|--------------------------|--------------|-----------|
| CWC-2PRAP | Drop Wire Clamp 1-2 Pair | Aluminum5052 | Plastic |
| CWC-2PRSP | | SS201/SS304 | |



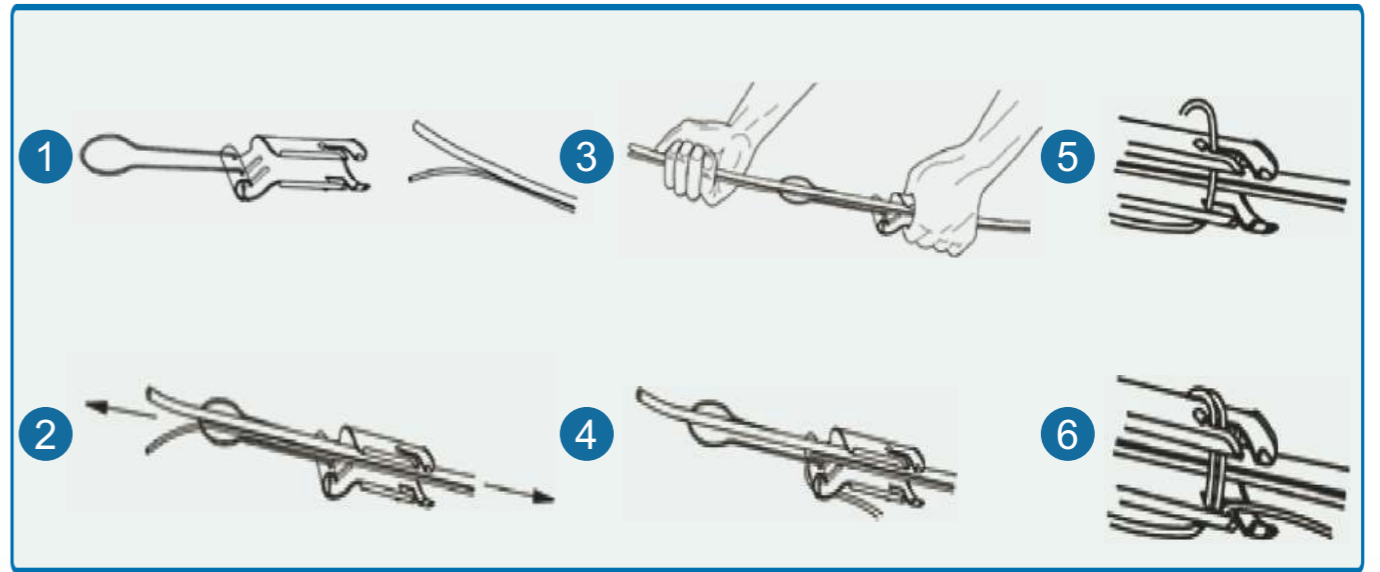
| Parts No. | Description | Material | Shim Type |
|-----------|------------------------|--------------|-----------|
| CWC-6PRAS | Drop Wire Clamp 6 Pair | Aluminum5052 | Serrated |
| CWC-6PRSS | | SS201/SS304 | |



| Parts No. | Description | Material | Shim Type |
|-----------|------------------------|--------------|-----------|
| CWC-6PRSD | Drop Wire Clamp 6 Pair | Aluminum5052 | Dimpled |
| CWC-6PRSS | | SS201/SS304 | |



Drop Wire Clamps



| Parts No. | Description | Material | Shim Type |
|-----------|------------------------|--------------|-----------|
| CWC-6PRAP | Drop Wire Clamp 6 Pair | Aluminum5052 | Plastic |
| CWC-6PRSP | | SS201/SS304 | |



| Parts No. | Description | Material | Cable Type |
|-----------|--------------------------|----------|------------|
| CWC-SF | Drop Wire Clamp 1-2 Pair | Q235 | Flat |



| Parts No. | Description | Material | Cable Type |
|-----------|-----------------|--------------|------------|
| CWC-SR | Drop Wire Clamp | SS201, SS304 | Round |



| Parts No. | Description | Material | Shim type |
|-----------|--------------------------|----------|-----------|
| CWC-ESD | Drop Wire Clamp 1-2 Pair | SS304 | Dimpled |



CATV Drop Wire Clamp

| Parts No. | Description | Material | Bail Wire |
|-----------|----------------------|---------------|-----------|
| CWC-ECATV | CATV Drop Wire Clamp | Aluminum 5052 | SS304 |



| Parts No. | Description | Material | Bail Wire |
|-----------|----------------------|-----------|-----------|
| CWC-CATV | CATV Drop Wire Clamp | AISI 1018 | SS304 |



Service Wedge Clamp

| Parts No. | Description | Material | Ultimate strength |
|-----------|-----------------------------|----------------|-------------------|
| CW-LFWC | Large Flexible Wedge Clamp | Aluminum T2024 | 1,600 lbs |
| CW-MFWC | Medium Flexible Wedge Clamp | Aluminum T2024 | 1,200 lbs |
| CW-SFWC | Small Flexible Wedge Clamp | Aluminum T2024 | 1,100 lbs |



| Parts No. | Description | Material | Ultimate strength |
|-----------|---------------------------------|----------------|-------------------|
| CW-LWC | Large Wedge Clamp Non Irridite | Aluminum T2024 | 1,600 lbs |
| CW-MWC | Medium Wedge Clamp Non Irridite | Aluminum T2024 | 1,200 lbs |
| CW-SWC | Small Wedge Clamp Non Irridite | Aluminum T2024 | 1,100 lbs |



| Parts No. | Description | Material | Ultimate strength |
|-----------|----------------------------------|----------------|-------------------|
| CW-LWCI | Large Wedge Clamp With Irridite | Aluminum T2024 | 1,600 lbs |
| CW-MWCI | Medium Wedge Clamp With Irridite | Aluminum T2024 | 1,200 lbs |
| CW-SWCI | Small Wedge Clamp With Irridite | Aluminum T2024 | 1,100 lbs |



Service Wedge Clamp

| Parts No. | Description | Material | Hook |
|-----------|--------------------------|----------|------------|
| CWN | Fiber Optical Wire Clamp | PP | Galvanized |



| Parts No. | Description | Material | Hook |
|-----------|--------------------------|----------|---------------------|
| CWN-H | Fiber Optical Wire Clamp | Nylon | Stainless Steel 201 |



| Parts No. | Description | Material | Hook |
|------------|-----------------|----------|---------------------|
| Galvanized | Cable retractor | PA | Stainless Steel 201 |



| Parts No. | Description | Material | Hook |
|-----------|--------------------|----------|------------|
| CWN-01 | Plastic Wire Clamp | Plastic | Galvanized |



| Parts No. | Description | Material | Hook |
|-----------|--------------------|----------|------------|
| CW-PC | Plastic Wire Clamp | Plastic | Galvanized |



J Clamp

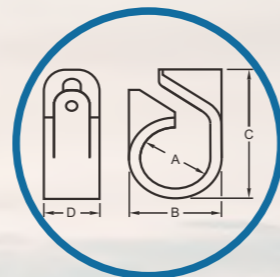
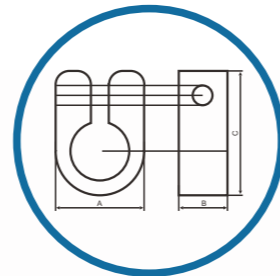
| Parts No. | Description | Material | Using range |
|-----------|------------------|------------------------|-------------|
| CW-SC | Suspension clamp | Carbon steel235+rubber | 5-15mm |



Other Fixed Cable

| Cleat Code | LSF Cleat Code | Cable Range | |
|------------|----------------|-------------|------|
| | | Min | Max |
| C3-C20 | C3LS-C20LS | 5.0 | 50.8 |

| Cleat code | LSF Cleat code | Dimensions | | | Cable Range | |
|------------|----------------|------------|------|------|-------------|------|
| | | A | B | C | Min | Max |
| C3 | C3LS | 12.5 | 15.0 | 26.5 | 7.6 | 5000 |
| C4 | C4LS | 15.0 | 15.0 | 27.0 | 10.0 | 5000 |
| C5 | C5LS | 17.0 | 16.0 | 29.7 | 12.7 | 4500 |
| C6 | C6LS | 19.5 | 18.5 | 33.0 | 15.2 | 3500 |
| C7 | C7LS | 25.0 | 19.5 | 36.0 | 17.8 | 2500 |
| C8 | C8LS | 26.0 | 19.5 | 38.0 | 20.3 | 1800 |
| C9 | C9LS | 29.0 | 19.5 | 42.0 | 22.8 | 1400 |
| C10 | C10LS | 32.5 | 22.0 | 46.0 | 24.4 | 1200 |
| C11 | C11LS | 36.0 | 25.0 | 60.5 | 27.7 | 800 |
| C12 | C12LS | 40.0 | 25.0 | 59.0 | 30.5 | 500 |
| C14 | C14LS | 46.5 | 25.0 | 63.0 | 35.5 | 500 |
| C16 | C16LS | 52.0 | 25.0 | 69.0 | 40.6 | 350 |
| C18 | C18LS | 58.0 | 25.0 | 72.5 | 45.7 | 300 |
| C20 | C20LS | 60.0 | 25.0 | 72.0 | 50.8 | 300 |



| Cleat code | LSF Cleat code | Cable Range | |
|------------|----------------|-------------|------|
| | | Min | Max |
| CWCC01-08 | CC01-CC08 | 10.5 | 51.1 |

| Cleat code | LSF Cleat code | Dimensions | | | Cable Range | |
|------------|----------------|------------|----|----|-------------|------|
| | | B | C | D | Min | Max |
| CWCC01 | CC01 | 18 | 32 | 12 | 10.5 | 14.5 |
| CWCC02 | CC02 | 22 | 36 | 14 | 12.2 | 16.7 |
| CWCC03 | CC03 | 26 | 43 | 16 | 14.6 | 19.8 |
| CWCC04 | CC04 | 31 | 51 | 18 | 17.7 | 24 |
| CWCC05 | CC05 | 37 | 57 | 20 | 21.7 | 28.5 |
| CWCC06 | CC06 | 43 | 65 | 22 | 26.2 | 34.2 |
| CWCC07 | CC07 | 52 | 78 | 25 | 31.9 | 41.6 |
| CWCC08 | CC08 | 62 | 91 | 26 | 39.3 | 51.1 |

Support Wire Deadend

| Parts No. | Description | Support Wire Type | Strand Ranging |
|-----------|----------------------|-------------------|-----------------|
| CW-SWD01 | Support Wire Deadend | Figure 8 Cable | 0.140" - 0.215" |
| CW-SWD02 | Support Wire Deadend | Figure 8 Cable | 0.120" - 0.135" |
| CW-SWD03 | Support Wire Deadend | Figure 8 Cable | 0.091" - 0.114" |
| CW-SWD04 | Support Wire Deadend | Figure 8 Cable | 0.062" - 0.100" |

| Parts No. | Description | Support Wire Type | Cable Type |
|-----------|--|-------------------|---------------|
| CW-SWD01 | Support Wire Splice $\phi 3/8"$ $\times 2-15/16"$ | Figure 8 Cable | 0.062"-0.1" |
| CW-SWD02 | Support Wire Splice $\phi 7/16"$ $\times 2-15/16"$ | Figure 8 Cable | 0.091"-0.114" |
| CW-SWD03 | Support Wire Splice $\phi 9/16"$ $\times 4-1/16"$ | Figure 8 Cable | 0.12"-0.135" |
| CW-SWD04 | Support Wire Splice $\phi 1"$ $\times 9"$ | Figure 8 Cable | 0.14"-0.215" |



Hoop Fastening Retractor

| Parts No. | Description | Material | Using range |
|-----------|---------------------|----------------|------------------------|
| CW-AB | Aluminum wire clamp | Aluminum alloy | for a variety of cable |

| Parts No. | Description | Material | Using range |
|-----------|-------------|-----------------|-------------|
| CW-RE | Retractor | Carbon steel235 | 12-20mm |

| Parts No. | Description | Banding Size |
|-----------|------------------------------|--------------|
| CW-HB | Fiber Optic House Attachment | 1-1/4" |

| Parts No. | Description | Material | Using range |
|-----------|-------------|-----------------|-------------|
| CW-CH | C type hook | Carbon steel235 | 20mm |



Support Wire Deadend

| Parts No. | Description | Material | Stud |
|-----------|-----------------------|------------|---------------|
| CW-DLC | D Cable Lashing Clamp | 1018 Steel | Grade 5 Steel |



| Parts No. | Description | Material | Bolt & Nut |
|-----------|--------------|---------------|--------------------------|
| CW-QSC | Q Span Clamp | 6063 Aluminum | 1/4"(6.6m) to 7/16"(16m) |



| Parts No. | Description | Material | Bolt & Nut |
|-----------|--------------|---------------|---------------|
| CW-CSC | C Span Clamp | 6063 Aluminum | Grade 2 Steel |



| Parts No. | Description | Material | Using range |
|-----------|------------------|-----------------------|-------------|
| CW-SR | Splint retractor | Carbon steel235+alloy | 2.0*7,2.2*7 |



| Parts No. | Description | Material | Bolt&Nut |
|-----------|--------------|-----------|---------------|
| CW-SSC | Q span clamp | Galvanize | Grade 2 Steel |



| Parts No. | Description | Material | Bolt&Nut |
|-----------|-------------|-----------|---------------|
| CW-DSC | Span clamp | Galvanize | Grade 2 Steel |



Drive Ring

| Parts No. | Description | Material | Length |
|-----------|-------------|---------------------------------------|--------------|
| CW-DH01 | Drive Hook | AISI1018 Steel Hot dip galvanizing | 5/16"x3-1/2" |
| CW-DH02 | Drive Hook | AISI1018 Steel Hot dip galvanizing | 7/16"x4-3/4" |



| Parts No. | Description | Material | Size |
|-----------|--------------|-----------------|--------------|
| CW-PH01 | P House Hook | AISI 1016 Steel | 3/16"x3-3/4" |
| CW-PH02 | P House Hook | AISI 1016 Steel | 3/16"x4-1/2" |
| CW-PH03 | P House Hook | AISI 1016 Steel | 1/4"x4-1/2" |
| CW-PH04 | P House Hook | AISI 1016 Steel | 5/16"x5-1/2" |



SWING HOOK, WITH BOLT, ZINC PLATED

| Size(mm) | Dimension(mm) | | | N.W.(g/pc) |
|----------|---------------|------|-----|------------|
| | A | D | L | |
| 8.6×100 | 30 | 8.6 | 100 | 83 |
| 8.6×120 | 30 | 8.6 | 120 | 94 |
| 8.6×140 | 30 | 8.6 | 140 | 102 |
| 10.6×160 | 30 | 10.6 | 160 | 115 |



Eye Bolts, with Lag Screw, Zinc Plated

| Size(mm) | Dimension(mm) | | | N.W.(g/pc) |
|----------|---------------|----|-----|------------|
| | A | D | L | |
| 5×50 | 12 | 5 | 50 | 12 |
| 6×50 | 12 | 6 | 50 | 18.3 |
| 6×90 | 12 | 6 | 90 | 27.2 |
| 6×125 | 12 | 6 | 125 | 35 |
| 6×100 | 12 | 6 | 100 | 29.5 |
| 6×95 | 22 | 6 | 95 | 34 |
| 8×80 | 12 | 8 | 80 | 45.3 |
| 8×100 | 12 | 8 | 100 | 53.2 |
| 8×150 | 12 | 8 | 150 | 73 |
| 8×120 | 22 | 8 | 120 | 64 |
| 10×100 | 14 | 10 | 100 | 87.2 |
| 10×110 | 14 | 10 | 110 | 93.4 |
| 10×185 | 14 | 10 | 185 | 139 |



Wrenchable P House Hook

| Parts No. | Description | Material | Size |
|-----------|-------------------------|---------------------------------------|-------------|
| CW-WPHH01 | Wrenchable P House Hook | AISI1016 Steel Hot dip galvanizing | 1/4"×3-3/4" |
| CW-WPHH02 | Wrenchable P House Hook | AISI1016 Steel Hot dip galvanizing | 1/4"×4-1/2" |



| Parts No. | Description | Material | Screw Thread |
|-----------|----------------------|----------|----------------|
| CW-BR01 | 7/8" Bridle Ring | AISI1008 | # 10 wood |
| CW-BR02 | 1-1/4" Bridle Ring | AISI1008 | # 14 wood |
| CW-BR03 | 1-5/8" Bridle Ring | AISI1008 | # 14 wood |
| CW-BR04 | 1-5/8" A Bridle Ring | AISI1008 | # 14 wood |
| CW-BR05 | 3" C Bridle Ring | AISI1008 | # 18 wood |
| CW-BR06 | 3/4" K Bridle Ring | AISI1008 | 10-24 machine |
| CW-BR07 | 1-1/4" B Bridle Ring | AISI1008 | 10-24 machine |
| CW-BR08 | 1-5/8" R Bridle Ring | AISI1008 | 1/4-20 machine |
| CW-BR09 | 1-3/4" R Bridle Ring | AISI1008 | 10-24 machine |



| Parts No. | Description | Material | Pin Length |
|-----------|---------------------|----------|------------|
| CW-DR01 | 1/2" Drive Ring | AISI1016 | 2-1/8" |
| CW-DR02 | 5/8" Drive Ring | AISI1016 | 2-3/8" |
| CW-DR03 | 7/8" Drive Ring | AISI1016 | 2-5/8" |
| CW-DR04 | 1-1/4" Drive Ring | AISI1016 | 2-7/8" |
| CW-DR05 | 5/8" L Drive Ring | AISI1016 | 2-13/16" |
| CW-DR06 | 7/8" L Drive Ring | AISI1016 | 3" |
| CW-DR07 | 1-1/4" L Drive Ring | AISI1016 | 3-3/8" |



| Parts No. | Description | Material | Stud |
|-----------|--------------------|----------|--------|
| CW-CL01 | 1/2" C Wire Loop | AISI1008 | 0.12" |
| CW-CL02 | 5/8" C Wire Loop | AISI1008 | 0.136" |
| CW-CL03 | 7/8" C Wire Loop | AISI1008 | 0.176" |
| CW-CL04 | 1-1/4" C Wire Loop | AISI1008 | 0.209" |



| Parts No. | Description | Material | Mast Range |
|-----------|-------------|----------|--------------|
| CW-MS | Mast Strap | AISI1008 | 1-1/4" to 2" |



Pole Band

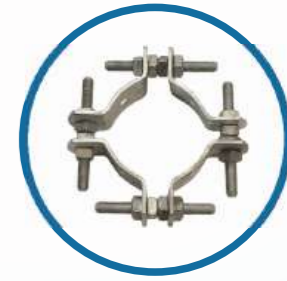
| Parts No. | Description | Material | Mast Range |
|-----------|------------------------|----------|------------|
| CW-MB | Drop Wire Mast Bracket | AISI1008 | 2" to 3" |



| Parts No. | Description | Bracket Size | Pole Size |
|-----------|-------------------------|--------------|------------|
| CW-SPB01 | Single Offset Pole Band | 1/4"x1-1/2" | 4"-1/2"-5" |
| CW-SPB02 | Single Offset Pole Band | 1/4"x1-1/2" | 6"-6-1/2" |
| CW-SPB03 | Single Offset Pole Band | 1/4"x1-1/2" | 7"-7-3/4" |
| CW-SPB04 | Single Offset Pole Band | 1/4"x1-1/2" | 8"-8-3/4" |

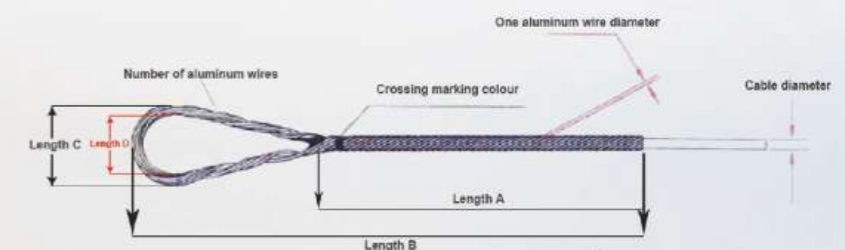


| Parts No. | Description | Bracket Size | Pole Size |
|-----------|----------------------|--------------|----------------|
| CW-APB01 | Adjustable Pole Band | 1/4"x4" | 7"-9-1/2" |
| CW-APB02 | Adjustable Pole Band | 1/4"x4" | 8"-11" |
| CW-APB03 | Adjustable Pole Band | 1/4"x4" | 9-1/2"-13-1/2" |
| CW-APB04 | Adjustable Pole Band | 1/4"x4" | 12"-16" |



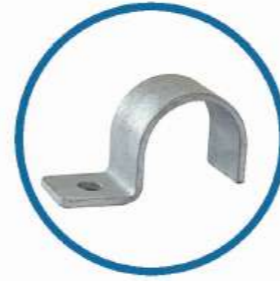
Guy Grip

| Cable Diameter | Length (MM) |
|----------------|-------------|
| 5.82-6.53 | 470 |
| 6.55-7.34 | 540 |
| 8.28-9.25 | 690 |
| 9.26-10.36 | 750 |
| 10.4-11.68 | 810 |
| 11.69-13.11 | 890 |
| 13.12-14.66 | 900 |
| 14.67-16.59 | 1030 |
| 16.60-18.77 | 1030 |
| 18.78-21.26 | 1170 |
| 21.27-24.05 | 1280 |
| 24.06-27.20 | 1430 |
| 27.21-30.78 | 1660 |



Pipe Clamps

| Parts No. | Description | Material | Clamp Size |
|-----------|----------------|-----------------|------------|
| CW-OU1 | One Hole Clamp | AISI 1018 Steel | 1/4" |
| CW-OU2 | One Hole Clamp | AISI 1018 Steel | 3/8" |
| CW-OU3 | One Hole Clamp | AISI 1018 Steel | 5/16" |
| CW-OU4 | One Hole Clamp | AISI 1018 Steel | 7/16" |
| CW-TU1 | Two Hole Clamp | AISI 1018 Steel | 7/16" |
| CW-OU5 | One Hole Clamp | AISI 1018 Steel | 1/2" |
| CW-OU6 | One Hole Clamp | AISI 1018 Steel | 3/16" |
| CW-OU7 | One Hole Clamp | AISI 1018 Steel | 9/16" |
| CW-OU8 | One Hole Clamp | AISI 1018 Steel | 5/8" |
| CW-TU2 | Two Hole Clamp | AISI 1018 Steel | 5/8" |
| CW-TU3 | Two Hole Clamp | AISI 1018 Steel | 11/16" |
| CW-OU9 | One Hole Clamp | AISI 1018 Steel | 3/4" |
| CW-TU4 | Two Hole Clamp | AISI 1018 Steel | 3/4" |
| CW-TU5 | Two Hole Clamp | AISI 1018 Steel | 7/8" |
| CW-OU10 | One Hole Clamp | AISI 1018 Steel | 1" |
| CW-TU6 | Two Hole Clamp | AISI 1018 Steel | 1" |
| CW-OU11 | One Hole Clamp | AISI 1018 Steel | 1-1/8" |
| CW-TU7 | Two Hole Clamp | AISI 1018 Steel | 1-1/8" |
| CW-OU12 | One Hole Clamp | AISI 1018 Steel | 1-1/4" |
| CW-TU8 | Two Hole Clamp | AISI 1018 Steel | 1-1/4" |
| CW-OU13 | One Hole Clamp | AISI 1018 Steel | 1-1/2" |
| CW-TU9 | Two Hole Clamp | AISI 1018 Steel | 1-1/2" |
| CW-TU10 | Two Hole Clamp | AISI 1018 Steel | 1-5/8" |
| CW-TU11 | Two Hole Clamp | AISI 1018 Steel | 1-7/8" |
| CW-TU12 | Two Hole Clamp | AISI 1018 Steel | 2-1/4" |
| CW-TU13 | Two Hole Clamp | AISI 1018 Steel | 2-1/2" |
| CW-TU14 | Two Hole Clamp | AISI 1018 Steel | 2-5/8" |
| CW-TU15 | Two Hole Clamp | AISI 1018 Steel | 3-1/2" |



Cable Clamps

| Parts No. | Cable Diameter Range (mm) | | Bag Qty |
|-------------|---------------------------|------|---------|
| | Min | Max | |
| CWC-RSFL202 | 4.7 | 5.2 | 50 |
| CWC-RSFL222 | 5.3 | 5.7 | 50 |
| CWC-RSFL242 | 5.8 | 6.2 | 50 |
| CWC-RSFL272 | 6.3 | 6.9 | 50 |
| CWC-RSFL302 | 7.0 | 7.7 | 50 |
| CWC-RSFL342 | 7.8 | 9.0 | 50 |
| CWC-RSFL382 | 9.1 | 9.7 | 50 |
| CWC-RSFL422 | 9.8 | 10.7 | 50 |
| CWC-RSFL462 | 10.8 | 11.8 | 50 |

Cable Clamps

| Parts No. | Cable Diameter Range (mm) | | Bag Qty |
|------------|---------------------------|------|---------|
| | Min | Max | |
| CWC-RCHL20 | 5.0 | 5.4 | 50 |
| CWC-RCHL22 | 5.5 | 5.9 | 50 |
| CWC-RCHL24 | 6.0 | 6.4 | 50 |
| CWC-RCHL26 | 6.5 | 6.9 | 50 |
| CWC-RCHL28 | 7.0 | 7.4 | 50 |
| CWC-RCHL30 | 7.5 | 7.9 | 50 |
| CWC-RCHL32 | 8.0 | 8.4 | 50 |
| CWC-RCHL34 | 8.5 | 9.0 | 50 |
| CWC-RCHL37 | 9.1 | 10.0 | 50 |
| CWC-RCHL40 | 10.1 | 10.7 | 50 |
| CWC-RCHL43 | 10.8 | 11.7 | 50 |
| CWC-RCHL47 | 11.8 | 12.7 | 50 |
| CWC-RCHL51 | 12.8 | 13.5 | 50 |



Other Product

| Parts No. | Description | Material | Protrusions Size |
|-----------|--|--------------------|------------------|
| CW-SLC | Short Lip Mount Meter Box Clamp Stainless Steel | Stainless Steel304 | 1 11/32" |



| Parts No. | Description | Material | Lug Size |
|-----------|---|--------------------|----------|
| CW-LLC | Long Lip Mount Meter Box Clamp Stainless Steel | Stainless Steel304 | 1" |



| Parts No. | Description | Material | Wire Diameter |
|-----------|-------------------------------|--|---------------|
| CW-CTP1 | CLEAR CABLE CLIP WITH TWO PIN | Clear flame retardant polycarbonate with AISI 1050 Steel | 3/16" |
| CW-CTP2 | CLEAR CABLE CLIP WITH TWO PIN | Clear flame retardant polycarbonate with AISI 1051 Steel | 7/16" |
| CW-COO1 | CLEAR CABLE CLIP WITH ONE PIN | Clear flame retardant polycarbonate with AISI 1052 Steel | 7/16" |



plant



1.



DROP WIRE CLAMP

2.



HOUSE HOOK

3.



ALUMINUM WIRE CLAMP

4.



PLASTIC WIRE CLAMP

5.



Q SPAN CLAMP